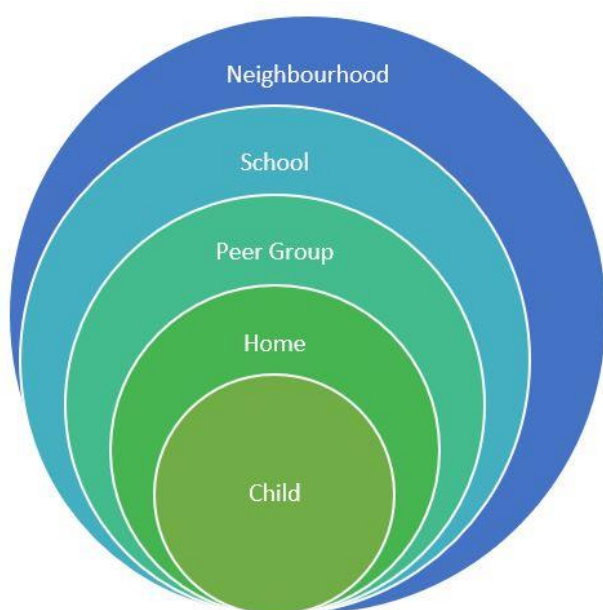


# Child Exploitation Screening Tool

## Guidance for completing

This screening tool is designed to help all professionals working with children and families to identify possible vulnerabilities to exploitation. It should be used when you have concerns that a child is being, or is at risk of being harmed, due to exploitation. Your observations of behaviours and any significant changes will be important as children will often deny, or be unaware, that they are being exploited.

The screening tool has been developed using the contextual safeguarding framework and domains. Contextual Safeguarding recognises and responds to vulnerability and strengths beyond individuals' families and carers. This includes their peer groups, education settings, online, neighbourhood and cultural environment. Whilst the approach is focused on risk outside the home, it is important to look at the vulnerabilities and protective factors across the individual's entire context to ensure that risk of harm within the home is also considered.



The form is an initial screening tool, not a risk assessment. When completing the tool please be specific about details. For example, names of places, people, shops, registration numbers, situations, websites and so on that can help to identify and consider harm that maybe happening to the individual.

It is important that appropriate language is used when discussing children and young people who have been exploited or are at risk of exploitation. Language implying that the child or young person is complicit in any way, or responsible for the crimes that have happened or may happen to them, must be avoided.

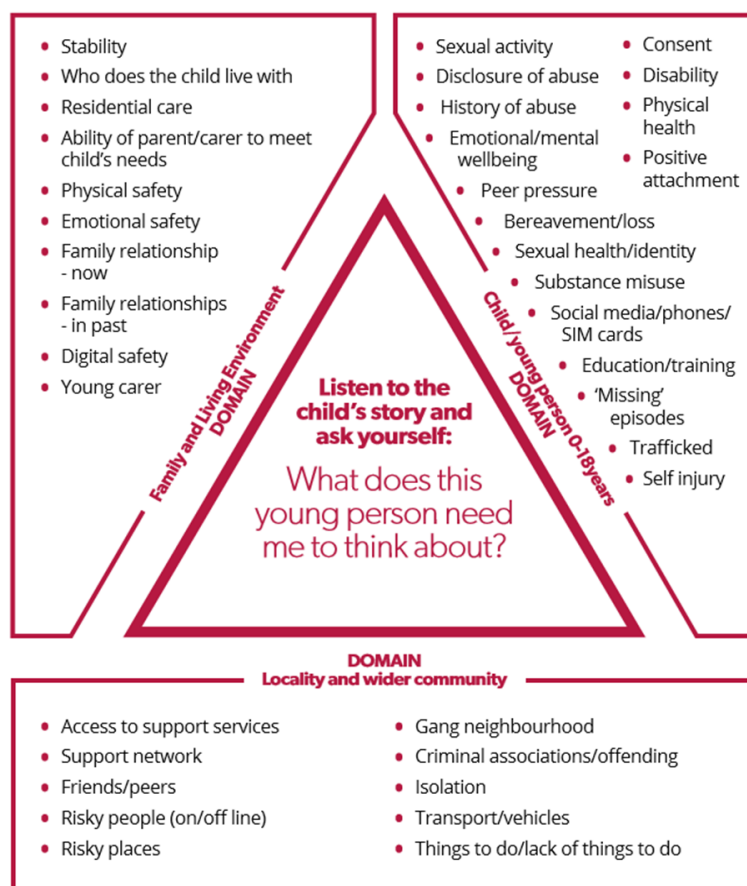
See [Appropriate language: Child sexual and/or criminal exploitation, guidance for professionals](#)

Understanding the child's lived experience is not just about their spoken words. A child's views can be gained via observations, written words or via pictures etc. What is important is that professionals ensure that methods of communication are appropriate to the child's needs.

A recurring message in child safeguarding practice reviews is the key role adults who are in a position to speak on behalf of the child can play. This can include parents, grandparents, neighbours, and members of the public. It is essential that where adults have shared vital information, they are listened to, and their views taken seriously.

### Child Exploitation Domains

The following diagram gives some examples of what to consider when you have concerns that a child is being exploited or is at risk of exploitation.



(Diagram taken from Buckingham LSCB Child Exploitation Indicator Tool)

## Referral pathway to seek advice and or make a referral Children's Services if concerned about exploitation

Practitioners should complete the screening tool.

## What to do following completion of the tool

### If the tool indicates there is a risk of Exploitation:

- **All screening tools for new cases go to MASH.** If you are unsure if it is a new case send through to MASH who will triage: [mash-children@oxfordshire.gov.uk](mailto:mash-children@oxfordshire.gov.uk), tel 0345 050 7666. The referring professional should include the child exploitation screening tool as part of the referral.

Professionals will also need to complete a MASH enquiry form. If Exploitation is clearly indicated, the case will be passed to the Emerald team (Youth Justice and Exploitation Team) for allocation or signposting. Advice re exploitation can also be sought from the Emerald team **01865 309196**.

- **For cases currently open to CSC**, practitioners should discuss their concerns with the allocated social worker, and where possible complete the screening tool, with the allocated social worker/core group, to inform next steps
- If after completing the form the practitioner is unsure about what to do about the concerns noted, and it is not at threshold of safeguarding (ref level 3/4 Threshold of need (ToN)), they can contact the Locality and Community Support Service for advice and support.
  - North: 0345 241 7666
  - Central: 0345 241 2703
  - South: 0345 241 2608

If at any stage in this process the information indicates that children are at risk of significant harm LCSS will help facilitate referral into the MASH.

For more information on Early Help please go to [Early Help and the Locality Community Support Service \(LCSS\)](#)

**Concerns regarding adults with care and support needs**

If you have concerns regarding the exploitation of a vulnerable adult with care and support needs, please see [OSAB – How to report concerns](#)