



Locality and Community Support Service North

LCSS North TEAM

LCSS North Team Number: 0345 241 2703

ASSISTANT TEAM MANAGER

Jo Lloyd – 07584 581180

jo.lloyd@oxfordshire.gov.uk

Working Times: Mon-Thurs 8.30am – 5pm, Fri 8:30 – 4pm



SENIOR – SPECIAL SCHOOLS

Pippa Sinclair – 07776 977958

phillipa.sinclair@oxfordshire.gov.uk

Working Times: Mon-Wed 8:30 – 5pm and Fri 8:30 – 4pm

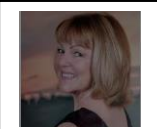


LCSS Worker

Debi Milner – 07827 822620

debi.milner@oxfordshire.gov.uk

Working times: Tue - Thurs : 8.30am-5.00pm



BANBURY AREA

Cary Johnston – 07827 947300

cary.johnston@oxfordshire.gov.uk

Working times: Wed and Thurs : 8.30am-5.00pm - Friday: 8.30am-4.00pm



Regan Parry – 07990 369035

regan.parry@oxfordshire.gov.uk

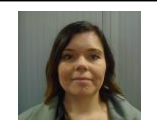
Working times: Mon: 8:30am-5:00pm Wed-Thurs: 8:30am-2:30pm



Jenny Dovey – 07436 701249

jennifer.dovey@oxfordshire.gov.uk

Working Times: Mon-Tues 9:00-3:00pm, Thurs: 8:30-5:00pm

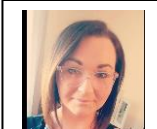


WITNEY AND WEST OXON AREA

Amy Beasley – 07917 534203

amy.beasley@oxfordshire.gov.uk

Working times: Tues and Wed 8:30am - 5pm



Louise Manley – 07827 822629

louise.manley@oxfordshire.gov.uk

Working times: Mon-Thurs 8.30am – 5pm, Fri 8:30 – 4pm



BICESTER AND AREA

Clive Wedlock – 07741 607832

clive.wedlock@oxfordshire.gov.uk

Working Times: Mon - Wed 8:30-5:00pm



Simon Mathers – 07827 947313

simon.mathers@oxfordshire.gov.uk

Working Times: Mon – Thurs: 8.30am to 5.00pm - Friday – 8.30am – 4.00pm



Introducing the Locality and Community Support Service (LCSS)

Locality and Community Support Service

The Locality and Community Support Service (LCSS) has been created as part of Oxfordshire County Council's, Children's Services Integration Programme to support partner agencies across Oxfordshire. It is a professional facing service (including community/voluntary sector).

LCSS North	Samuelson House, Tramway Rd, Banbury OX16 5AU	LCSS.North@oxfordshire.gov.uk
LCSS Central	Knights Court, Between Towns Road, Cowley, Oxford, OX4 3LX	LCSS.Central@oxfordshire.gov.uk
LCSS South	Abbey House, Abbey Close, Abingdon, Oxon, OX14 3JD	LCSS.South@oxfordshire.gov.uk

When to contact LCSS

You should contact the Locality Community Support Service if you:

- Have emerging concerns for a child that does not require an immediate safeguarding response – You should call the MASH immediately if an immediate safeguarding response is required: - **Tel: 0345 050 7666**
- Need support or guidance with an Early Help Assessment or TAF
- Wish to complete a No Names Consultation

Professionals should:

- Discuss their concerns with the family
- Gain advice from LCSS with family's knowledge
- If you wish to discuss a concern without a family's consent you can gain advice via a No Names Consultation only

If LCSS are supporting you with a family and immediate safeguarding concerns arise, you must call the MASH immediately