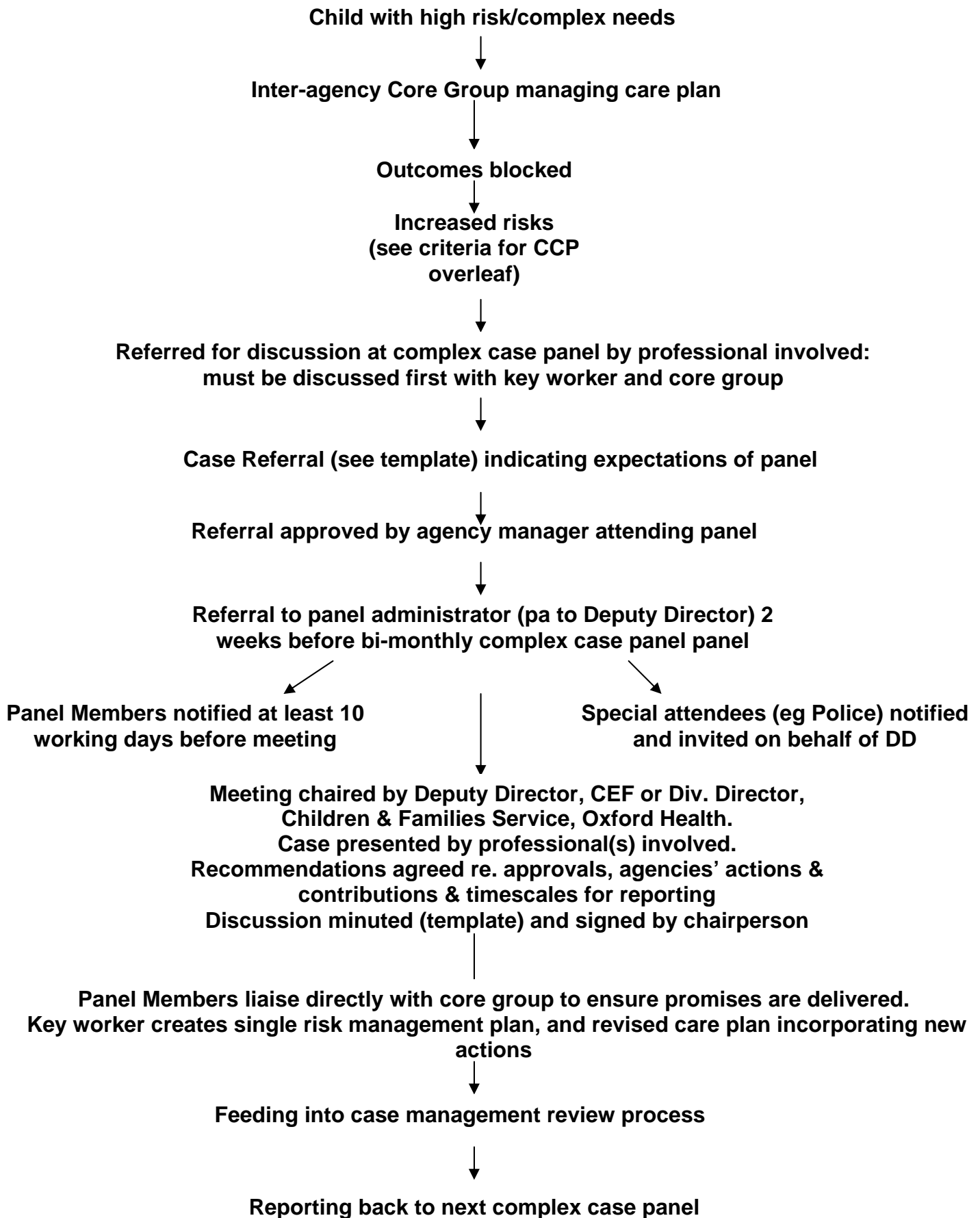


## Complex Case Pathway flow chart



## Criteria for Complex Case Planning

The process seeks to deliver a flexible and holistic, multi-agency response for children and young people who have identified multiple needs, whose planned outcomes are not being achieved despite the best efforts of the inter-agency core group and for whom risks are increasing. For example:

- **Neglect:** cases with a CP Plan, which have had a plan for more than 18 months and where the area service manager has reviewed the case but remains concerned about the absence of progress
- Cases where care proceedings have been instigated but have resulted in a **care order not being made, against LA advice.**
- **High risk adolescents:** cases where adolescents, living in the community, whether in their families, or in care, who are exhibiting behaviours which create a risk of significant harm, whether to self or others, through violence, offending, self-harm or serious substance misuse. They may be at risk of a secure order.
- **Out of county placements:** cases where adolescents have been placed at long distance and **are lacking co-ordinated services** from a range of professionals to be able to move in-county.
- **Multiple complex needs at risk of poor outcomes:** cases where adolescents have both mental health problems and substance misuse; or mental health problems and learning disability; or where two statutory proceedings are in place at the same time eg. criminal proceedings and child protection conferencing for a young person with sexually harmful behaviours

(This list is intended to be illustrative, not exhaustive.)

### Leading to:

Child/Young person's increased risk of:

- Abuse/neglect
- Self-harm/risky behaviours
- Harm to others
- Long-term dislocation from family and community